

COVID-19 VACCINE FOR SOUTH DAKOTA RESIDENTS

Priority Groups for Phase 1

- + **Frontline Healthcare Workers** (working in an emergency department, ICU, COVID unit, or general acute care)
- + **Long-Term Care Facility Healthcare Workers**

A



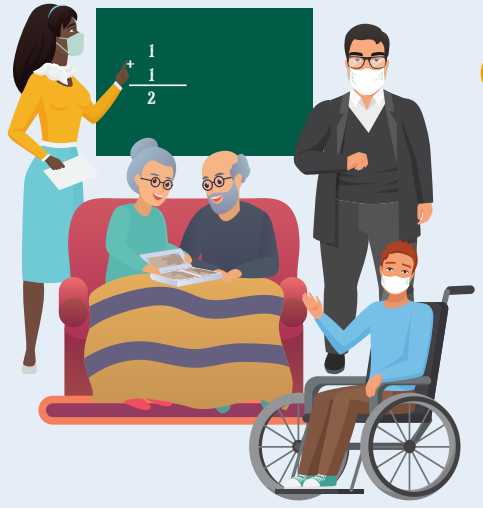
B

- + **Long-Term Care Residents** (nursing home and assisted living)

- + **Other healthcare workers, including laboratory and clinic staff**
- + **Public Health Workers**

- + **Emergency Medical Services**
- + **Law Enforcement**
- + **Correctional Officers**

C



D

- + **Persons Aged 65 Years and Older**
- + **High Risk Patients - dialysis, post-transplant, and active cancer**
- + **High Risk Residents in Congregate Settings, Residents in Licensed Independent Living Facilities, and Residents of Licensed Group Homes**
- + **Persons with underlying medical conditions under the age of 65**
- + **Teachers and Other School/College Staff**
- + **Funeral Service Workers**

WE ARE CURRENTLY HERE

- + **Fire Service Personnel**
- + **Other Critical Infrastructure Workers, including water and wastewater, energy, finance, food service, food and agriculture, legal, manufacturing, shelter and housing, transportation and logistics, information technology and communications**

[Click for More Information on Critical Infrastructure Sectors](#)

Open to All South Dakotans 16 years and older on APRIL 5, 2021

E



Due to limited allocation of the vaccine, the South Dakota Department of Health will use COVID-19 infection rates and will follow recommendations from the Advisory Committee on Immunization Practices (ACIP) to guide which counties will receive the vaccine first. Individuals qualifying for vaccination based on age or underlying health condition must be South Dakota residents.

Expected COVID-19 Vaccine Availability for South Dakota Residents

Phase	Population Group	January	February	March	April	May-December
1A	Frontline healthcare workers and long-term care facility healthcare workers	■	■	■	■	■
1B	Long-term care residents	■	■	■	■	■
1C	EMS, public health workers, and other healthcare workers (<i>lab & clinic staff</i>)	■	■	■	■	■
	Law enforcement, correctional officers	■	■	■	■	■
1D	Persons aged 65 years and older	■	■	■	■	■
	High risk patients - dialysis, post-transplant, and active cancer	■	■	■	■	■
	High risk residents in congregate settings	■	■	■	■	■
	Persons with <u>underlying medical conditions</u> under the age of 65			■	■	■
	Teachers and other school/college staff			■	■	■
	Funeral service workers			■	■	■
1E	Fire service personnel			■	■	■
	Includes public-facing workers in essential and <u>critical infrastructure</u>			■	■	■
Phase 2	Starting April 5, 2021 All others 16 years and older				■	■

■ Estimated Vaccine Availability

Note: Tribal vaccine allocation & administration is handled by the IHS
Veteran vaccine allocation & administration is handled by the VA

Due to limited allocation of the vaccine, the South Dakota Department of Health will use COVID-19 infection rates and will follow recommendations from the Advisory Committee on Immunization Practices (ACIP) to guide which counties will receive the vaccine first. Individuals qualifying for vaccination based on age or underlying health condition must be South Dakota residents.



SOUTH DAKOTA DEPARTMENT OF HEALTH

covid.sd.gov