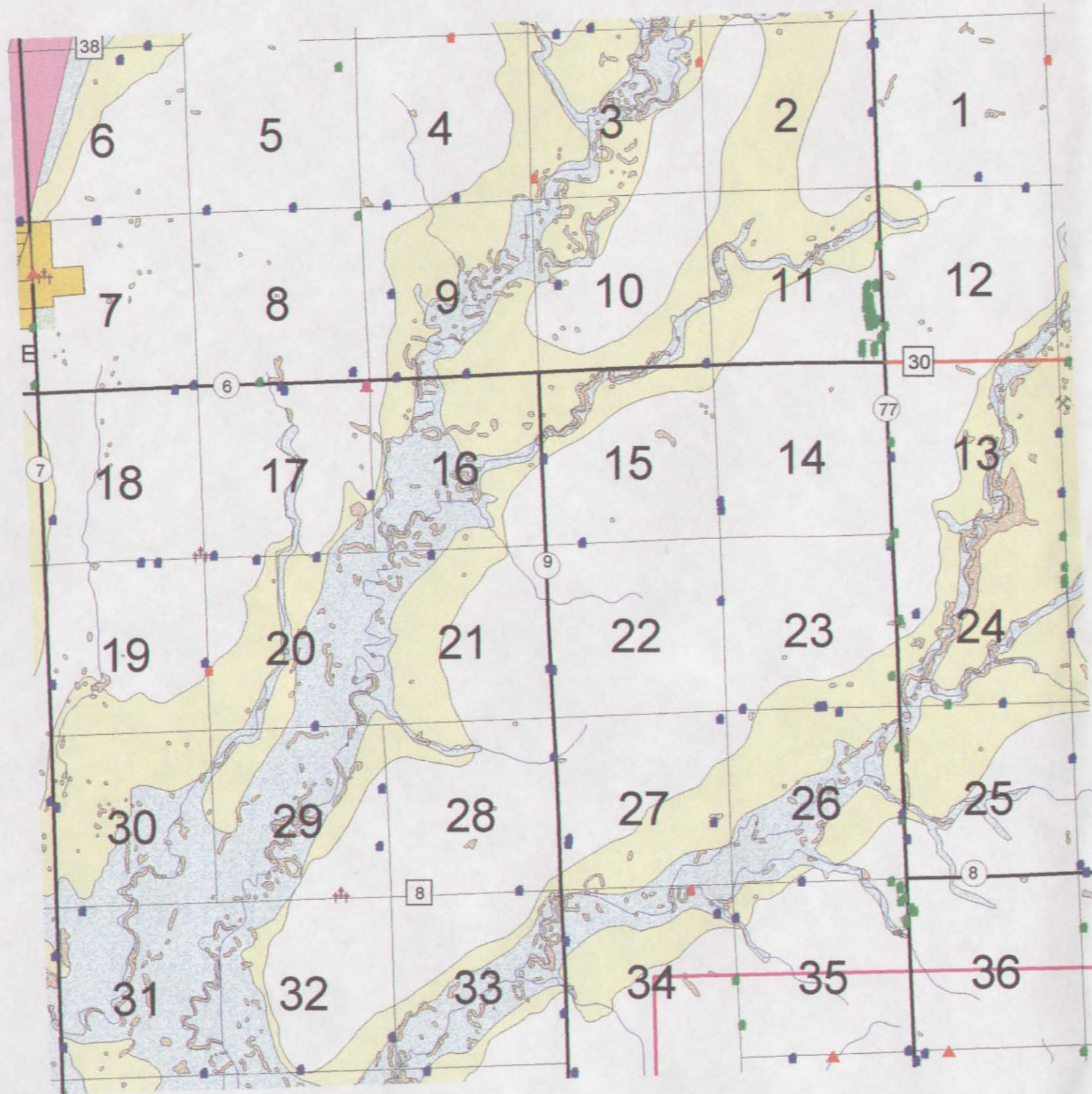


# DEVELOPMENT MAP STERLING TOWNSHIP



## PLANNING AREAS

- Municipalities - Areas of Development Opportunity
- Areas of Development Transition
- Areas of Development Stability
- City of Brookings/Brookings County Joint Jurisdiction Boundary

## HYDROLOGIC FEATURES

- Lakes
- Big Sioux River
- Wetlands
- Streams and Rivers
- Floodplain
- Aquifer
- Wellhead Protection Area

## TRANSPORTATION FEATURES

- Interstate 29
- State and Federal Highway
- County Highway
- County and Township Gravel Roads
- Railroad

## STRUCTURES

- Farm
- Rural Residence (Non-Farm)
- Abandoned Residences
- School
- Business
- Church

## Special Features

- Cemetery
- Gravel Pit
- Utilities
- Landfill

